

New!



EASY LOCATOR

Digging, drilling or just looking for utilities?

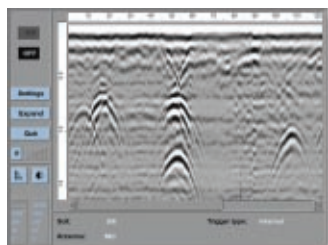
Easy Locator is a Ground Penetrating Radar that locates all types of materials underground, metallic or non-metallic. It is a robust tool that can prevent utility damages. Powerful, low-cost and easy to use.



L E T ' S M A K E I T V I S I B L E !

Easy Locator is a Ground Penetrating Radar designed to meet the needs of the utility locate professional.

The Easy Locator breaks many barriers in terms of ground penetrating radar systems on the market today. Very little experience is needed to run the system. With a simple user interface, only a few commands are required for you to begin scanning the ground for utilities at full walking speed.



Easy Vision radargram with pipes and cables detected.

Easy Locator's GPR technology complements standard electromagnetic techniques in the field, providing you with a cost effective total solution. It can detect all material types, both metallic and non-metallic, including plastics, concrete, ceramics, asphalt composite and more. The data obtained in the field provides the user with the exact location of cables, pipes, duct banks, conduits, or depth to bedrock.

With its low cost, Easy Locator is an indispensable tool for utility and construction work at urban and industrial sites, minimising the risks of damage and project delays.

The control unit of the Easy Locator supports three antennas for detecting utilities and other buried objects underground at various depths: Shallow, Mid and Deep. The system can also be adjusted to different soil types for maximum



performance and has a backup on-screen cursor function for precise locating of an object.

Our Easy Vision software operates with a dedicated, field rugged monitor. It is easy to use and free upgrades are available through the Internet.

TECHNICAL SPECIFICATION

Power supply:	Li-ion 12V DC battery		
Operating time:	8/16 h operated with/without monitor		
Charge time:	4 h		
Software:	Easy Vision (free upgrades through the Internet)		
Operating temp:	-10° to +50°C or 15° to 120°F		
Environmental:	IP 67		
Monitor:	IP 54, Ultra Hi-Brite 10,4" TFT, Shock tolerant		
Antenna	Shallow	Mid	Deep
Max depth penetr.	3m/9'	4m/12'	5m/15'
Dim. with wheels (excl. handle)	67x47x18cm/ 26"x19"x7"	67x47x18cm/ 26"x19"x7"	84x56x21cm/ 33"x22"x8"
Weight, complete (excl. monitor)	14 kg/ 31 lb	15 kg/ 33 lb	20 kg/ 44 lb

Head office

Malå GeoScience, Skolgatan 11
SE-930 70 Malå, Sweden
Phone: +46 953 345 50, Fax: +46 953 345 67
E-mail: sales@malags.se

America

Malå GeoScience USA, Inc.
2040 Savage Rd. PO Box 80430, Charleston, SC 29416
Phone: +1 843 852 5021, Fax +1 843 769 7397
E-mail: sales.usa@malags.se



MALÅ
GEOSCIENCE

Head Office: Skolgatan 11, SE-930 70 Malå, Sweden, Phone: +46 953 345 50

www.malags.com